



Julia: +34 607 25 70 57 / Alison: +34 622 77 05 69

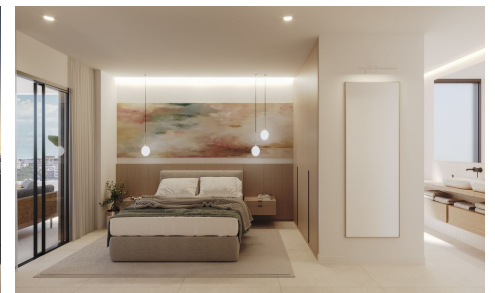
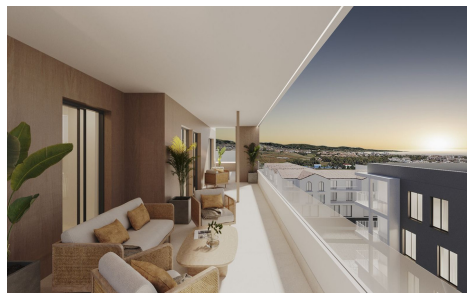
info@europeanbricks.com

MLS59259E



Penthouse in San Pedro de Alcántara

€870,000



3



2



119m²



N/A



This elegant residential complex consists of 35 homes with 2 and 3 bedrooms, including duplexes with terrace-solarium. Garages are located in the basement, and commercial spaces are on the ground floor, all within a cutting-edge architectural building with top-notch quality and an exceptional location in the heart of the Costa del Sol. With contemporary architectural lines, it is a unique project featuring exclusive two and three-bedroom homes with spectacular terraces. Each residence offers well-distributed interior spaces where the living room, dining area, and kitchen seamlessly blend into a space designed for enjoying the breathtaking views through large windows. The connection

www.europeanbricks.com